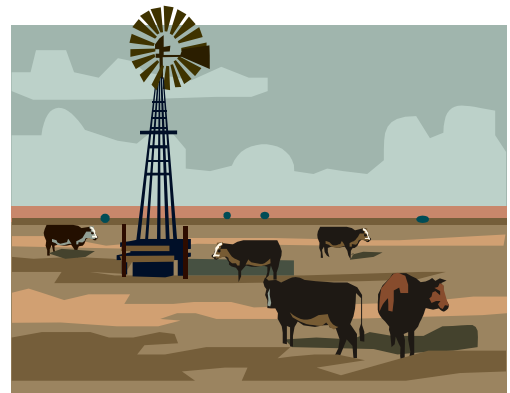


Situation 1:

You inherited your grandfather's large ranch located over the recharge zone. The land has two sinkholes and a cave that fill up with stormwater runoff when it rains. Local developers are interested in buying it. Your grandfather had rights to build as much as he wanted on the ranch because he got permission from the City before stricter laws came into effect. As a result, you could sell your land to someone who would build a lot of houses, streets, and office buildings. This would mean a lot of money for you, but would also mean little of the natural land will remain. You could also choose someone who would follow stricter building laws and leave the land's sinkholes and caves to protect the aquifer. You would still make money when you sell the land, but it would be a much smaller amount. You could also keep the property and not build on it at all, but the land is worth a lot, and your taxes are so high that you may not be able afford to pay them. **What will you do?**

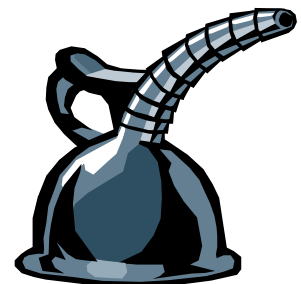
- A. Build as much as possible on the ranch using your grandfather's rights.
- B. Build less on the ranch following the stricter laws preserving and protecting the caves and sinkholes.
- C. Continue ranching and choose to work past your planned retirement age in order to pay the taxes.
- D. Other option



Situation 2:

You change your car's motor oil to save some money, but you're not sure what to do with the used oil. You have 6 quarts of used oil. **What will you do?**

- A. Pour the oil down the stormdrain at the curb.
- B. Pour the oil in the dirt in the empty lot on the corner.
- C. Pour the oil directly into the creek.
- D. Drive 10 miles to the nearest mechanic shop to recycle your oil.
- E. Pour it into a handy natural opening in the ground.
- F. Other option



Situation 3:

Your car is really dirty and needs to be washed, but you are not sure of the best way to get the job done. **What will you do?**

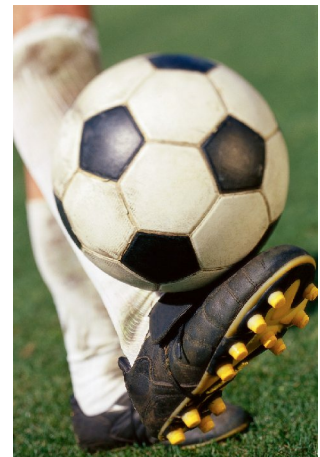
- A. Wash the car in the driveway to save yourself the cost of a carwash.
- B. Drive 10 miles to the local car wash and pay \$15.00 for the wash.
- C. Drive your car onto your front lawn and wash the car on the grass.
- D. Wash the car on the driveway and put sandbags to direct the runoff into your yard.
- E. Other option



Situation 4:

Your soccer league's home field is located over the Edwards Aquifer Recharge Zone. It is located uphill of a large sinkhole, and therefore water-polluting chemicals like fertilizers and pesticides are not used to maintain the fields. A recent fire ant invasion has stopped the games. There is an upcoming state tournament scheduled for your home field. If you do not apply pesticides, you may have to cancel the tournament. **What will you do?**

- A. Spray the field with pesticides for \$2,000 and hold the tournament. Each family pays \$2.00 extra soccer fees.
- B. Don't spray the field and take your chances that the tournament might be called off due to fire ants.
- C. Use the least toxic pesticide by sprinkling baits on the mounds. The tournament will have to be rescheduled to allow for the 2-month time it takes for the bait to work. Cost \$500.00. Each family pays 50 cents in extra soccer fees.
- D. Hire someone to steam treat fire ant mounds for \$10,000. Each family will have to pay \$100.00 extra soccer fees, so you cannot purchase team uniforms for the tournament.
- E. Other option

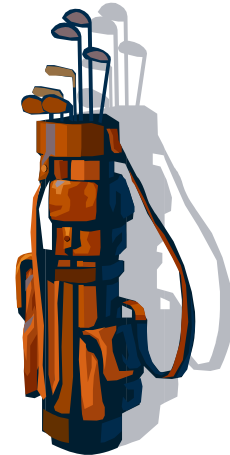


Situation 5:

You recently moved to Austin and now must choose how to landscape your new yard. You notice that many of your neighbors yards have gardens with native plants, but back in your old hometown, your favorite hobby was to practice your golf swing on your front lawn. A lawn will require fertilization and lots of water to stay green and healthy. Native plants don't need nearly as much water or fertilizer, but they can attract wild animals. Your neighbors complain of raccoons knocking over their garbage cans, deer eating their plants, skunks spraying their dogs, and coyotes attacking their cats.

What will you do?

- A. Use native plants in your yard.
- B. Plant a lawn.
- C. Other option



Situation 6:

You live on the recharge zone next to the Colorado River. Your favorite thing to do is go fishing early in the morning. You just bought a boat, but even though your property leads up to the river, you don't have ramp or dock. There is a public boat launch site on the opposite side of the lake, which is about a 40 minute drive, but you'd rather have your own private launch site.

What will you do?

- A. Build a road down to the lake and install a dock.
- B. Use the public launch site on the opposite side of the lake.
- C. Other option



Situation 7:

You snack on a candy bar and soda on your 20 minute walk home from school everyday. You always finish your snack before you reach home and have the empty soda can and candy wrapper to throw away. **What will you do?**

- A. Carry the trash home, throw the candy wrapper in the trash and recycle the can.
- B. Throw your trash in one of the stormdrains (openings in the curb of the street) on your walk home.
- C. Throw your trash on the side of the street.
- D. Throw your trash in the bushes.
- E. Other option

